

Fermat-1 RT 200 MD Log

Format: Fer-1_RT_8.5in_2MD

Vertical Scale: 1:200

Graphics File Created: 06-Jan-2009 04:45

PIP SUMMARY

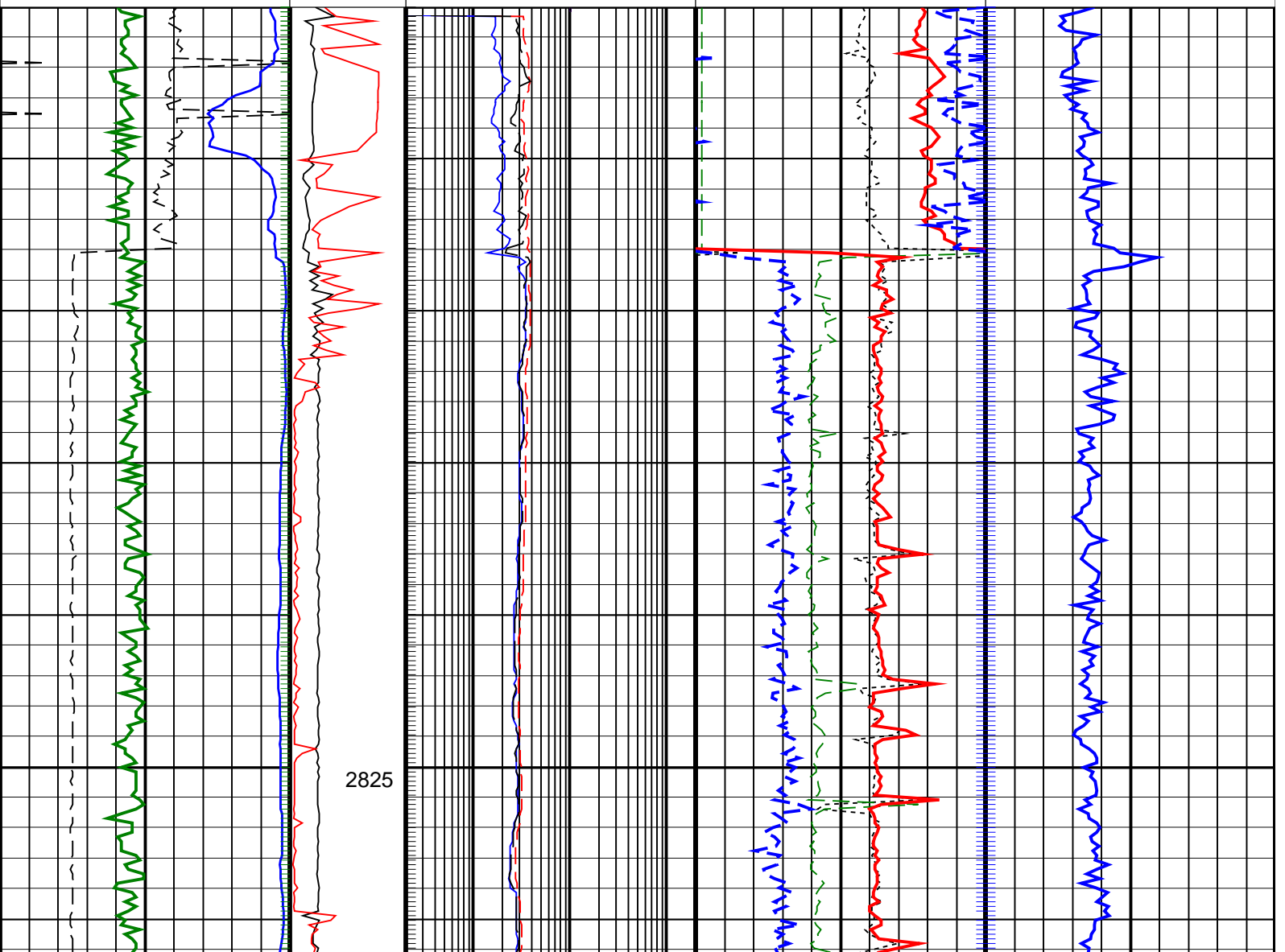
┆ Gamma Ray Samples

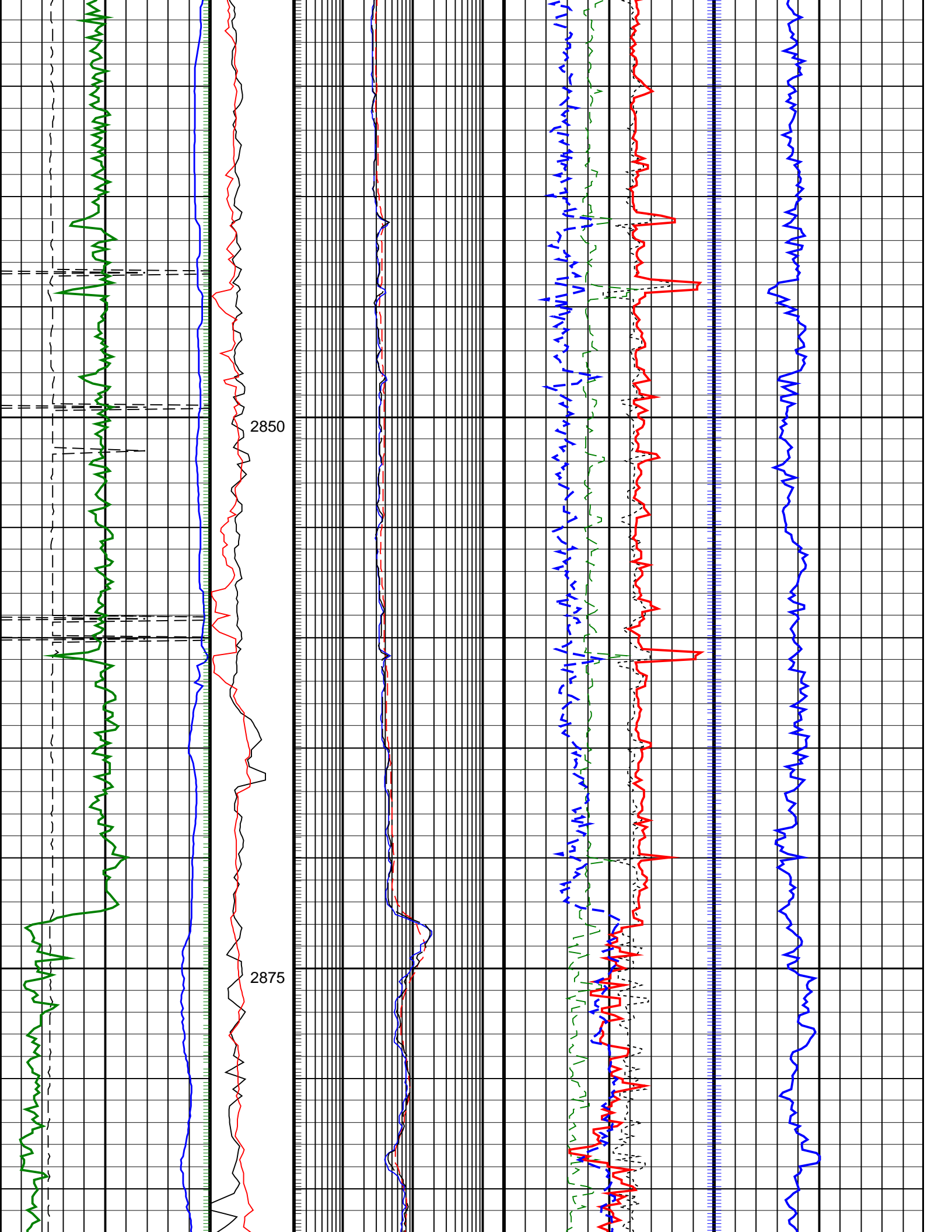
Delta-T Samples ┆

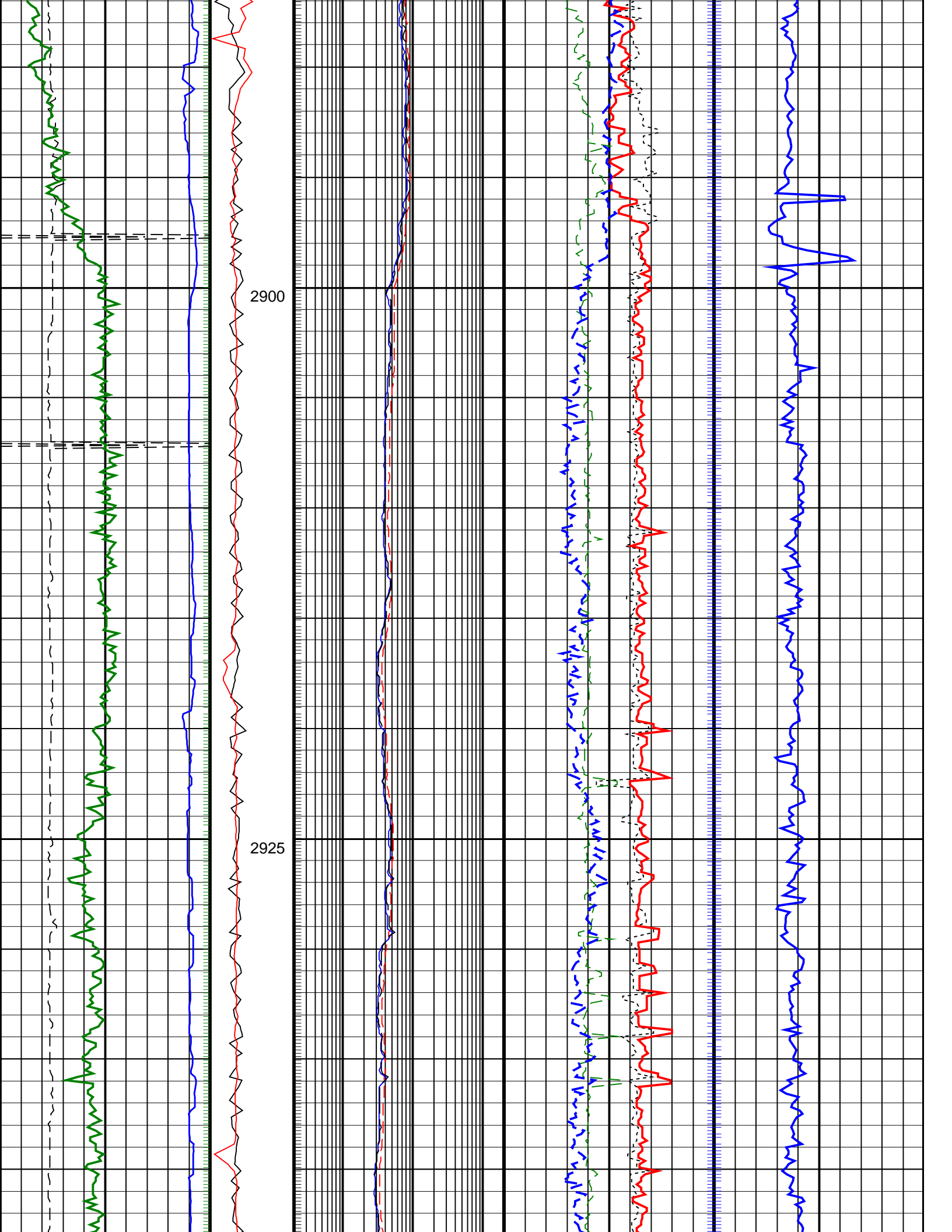
┆ Resistivity Samples

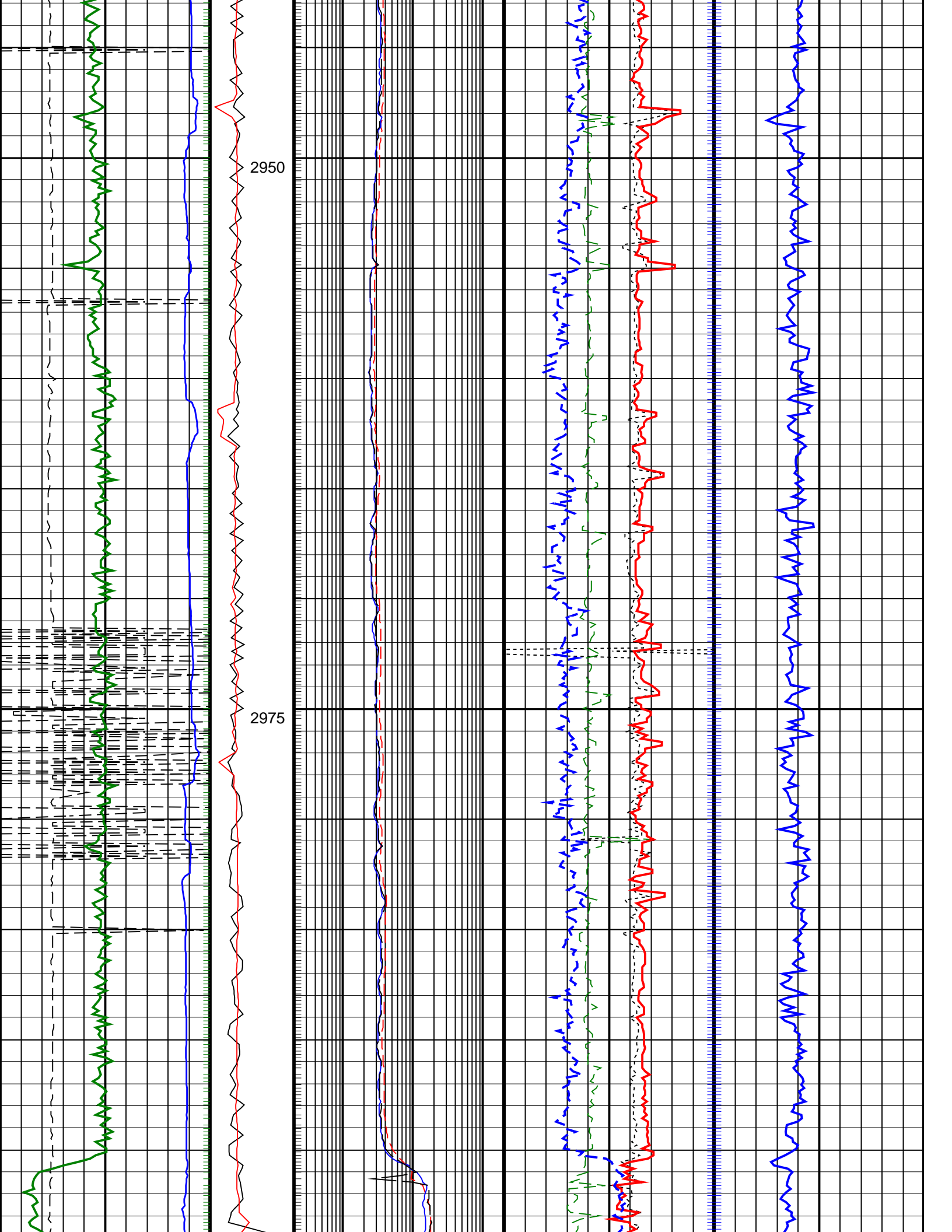
Neutron Samples ┆

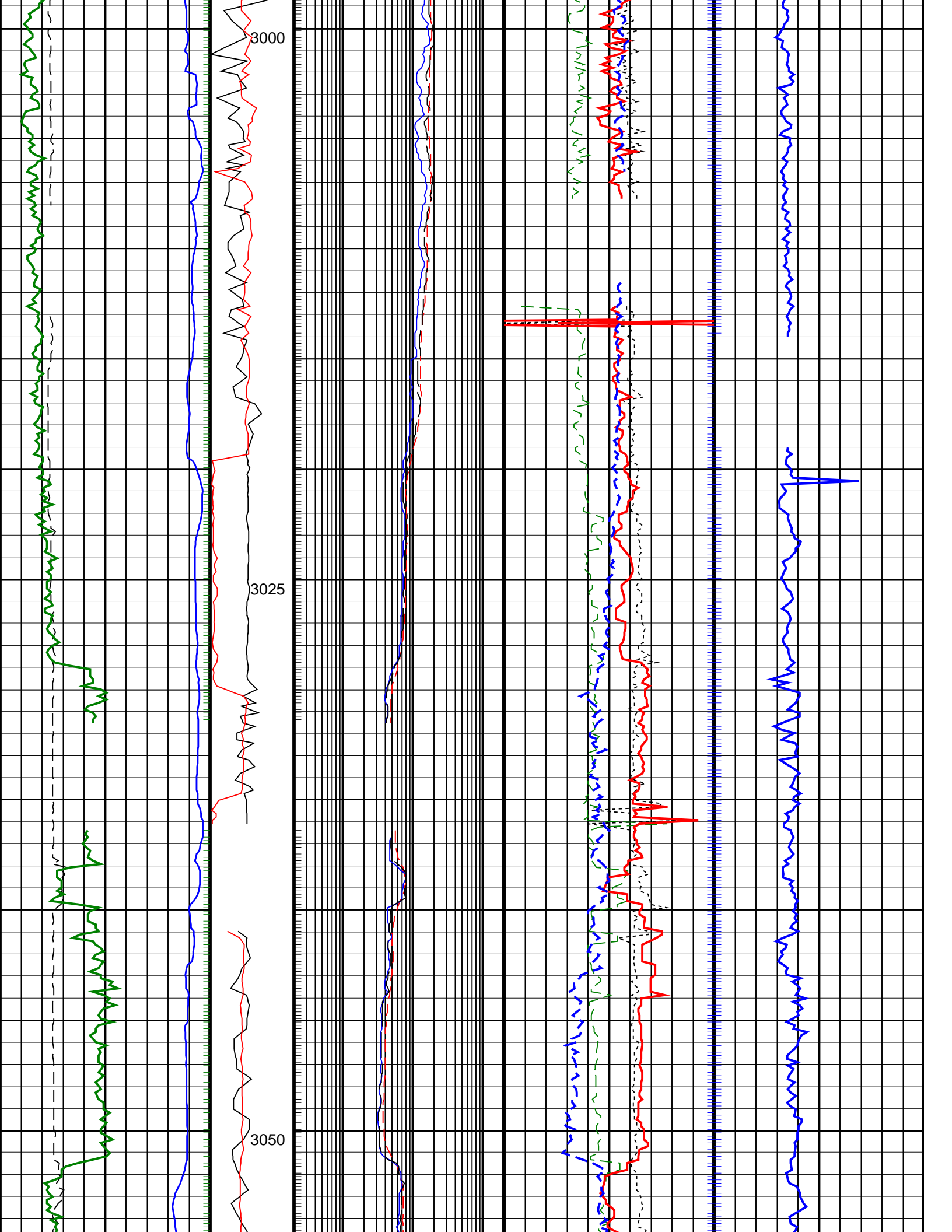
			Thermal Neutron Porosity, Real-Time (TNPH_ADN_RT) 45 (PU) -15
ARC Gamma Ray, Real-Time (ARC_GR_RT) 0 (GAPI) 200	ARC BHCorr Phase-Shift Resistivity 40-in. at 2 MHz, Real-Time (P40H_RT) 0.2 (OHMM) 200	Photoelectric Factor, Real-Time (PEF_ADN_RT) 0 (----) 10	
Average Borehole Diameter, Real-Time (ADIA_ADN_RT) 6 (IN) 16	MWD Collar RPM (CRPM_RT) (RPM) 0 250	ARC BHCorr Phase-Shift Resistivity 16-in. at 2 MHz, Real-Time (P16H_RT) 0.2 (OHMM) 200	Bulk Density Correction, Real-Time Computed Downhole (DRHO_DH_ADN_RT) -0.25 (G/C3) 0.25
ROP*5 (ROP5) (M/HR) 200 0	PKPK_RPM (Stick_RT) (RPM) 0 500	ARC BHCorr Attenuation Resistivity 40-in. at 2 MHz, Real-Time (A40H_RT) 0.2 (OHMM) 200	Bulk Density, Real-Time Computed Downhole (RHOB_DH_ADN_RT) 1.95 (G/C3) 2.95
			Delta-T Compressional, Real-Time (DTCO_RT) 40 (US/F) 140

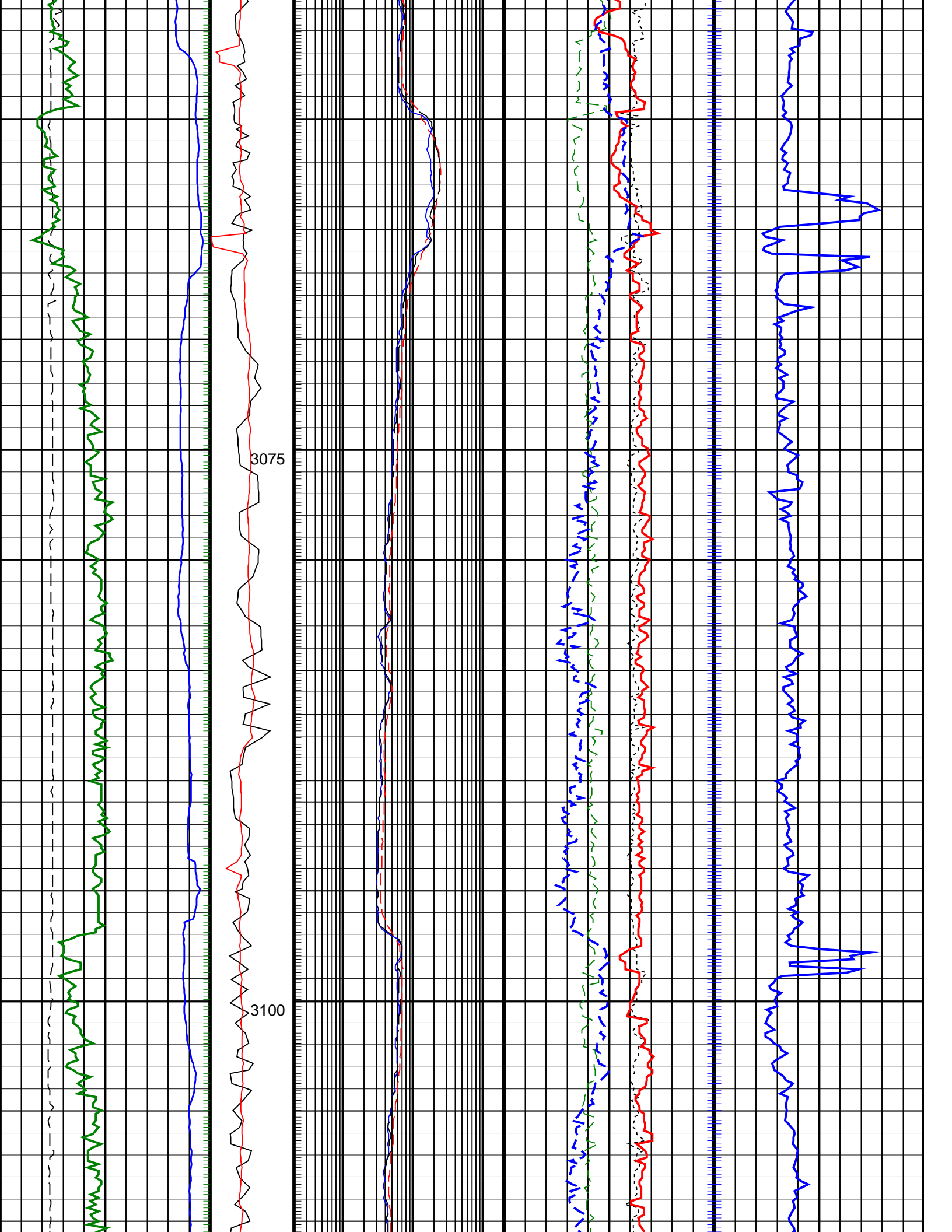


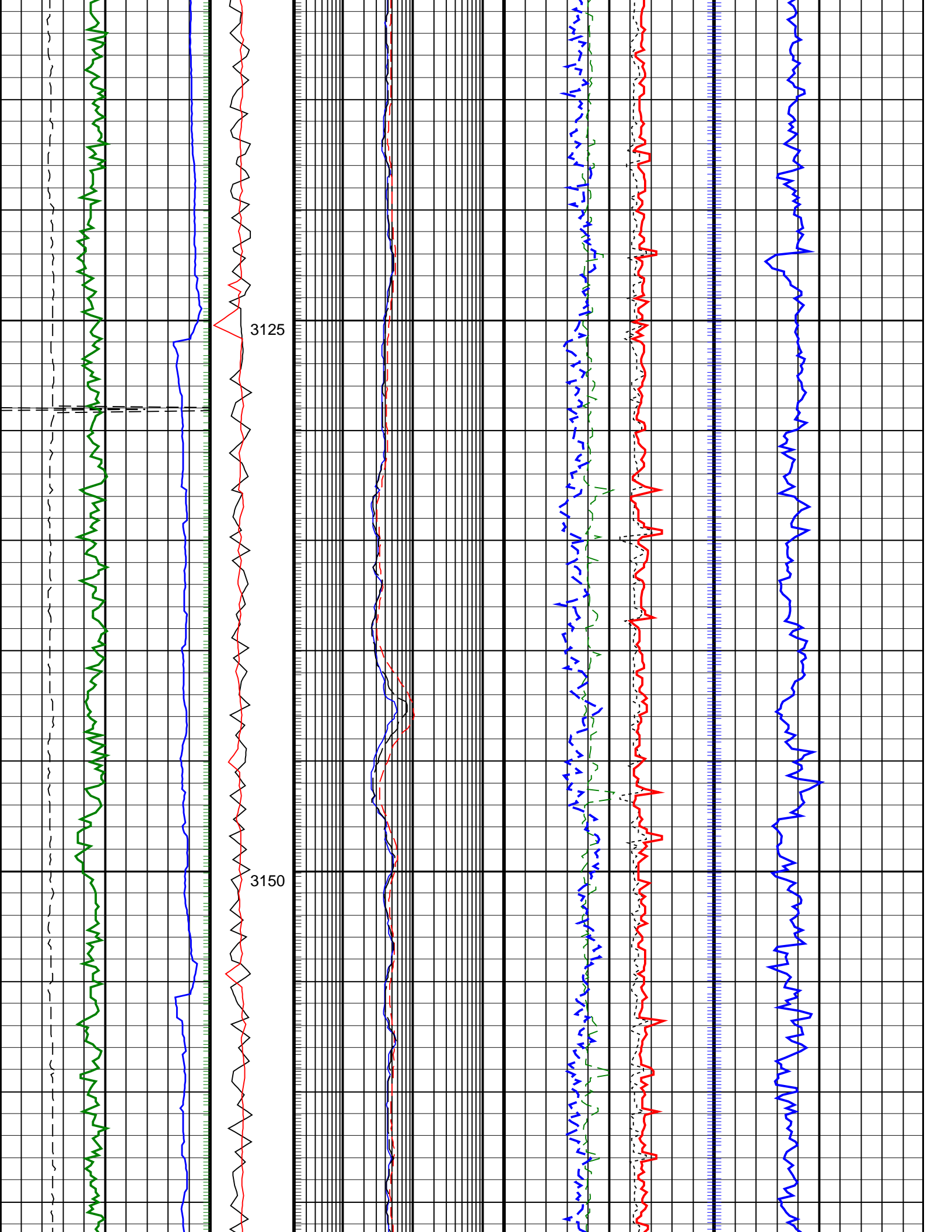


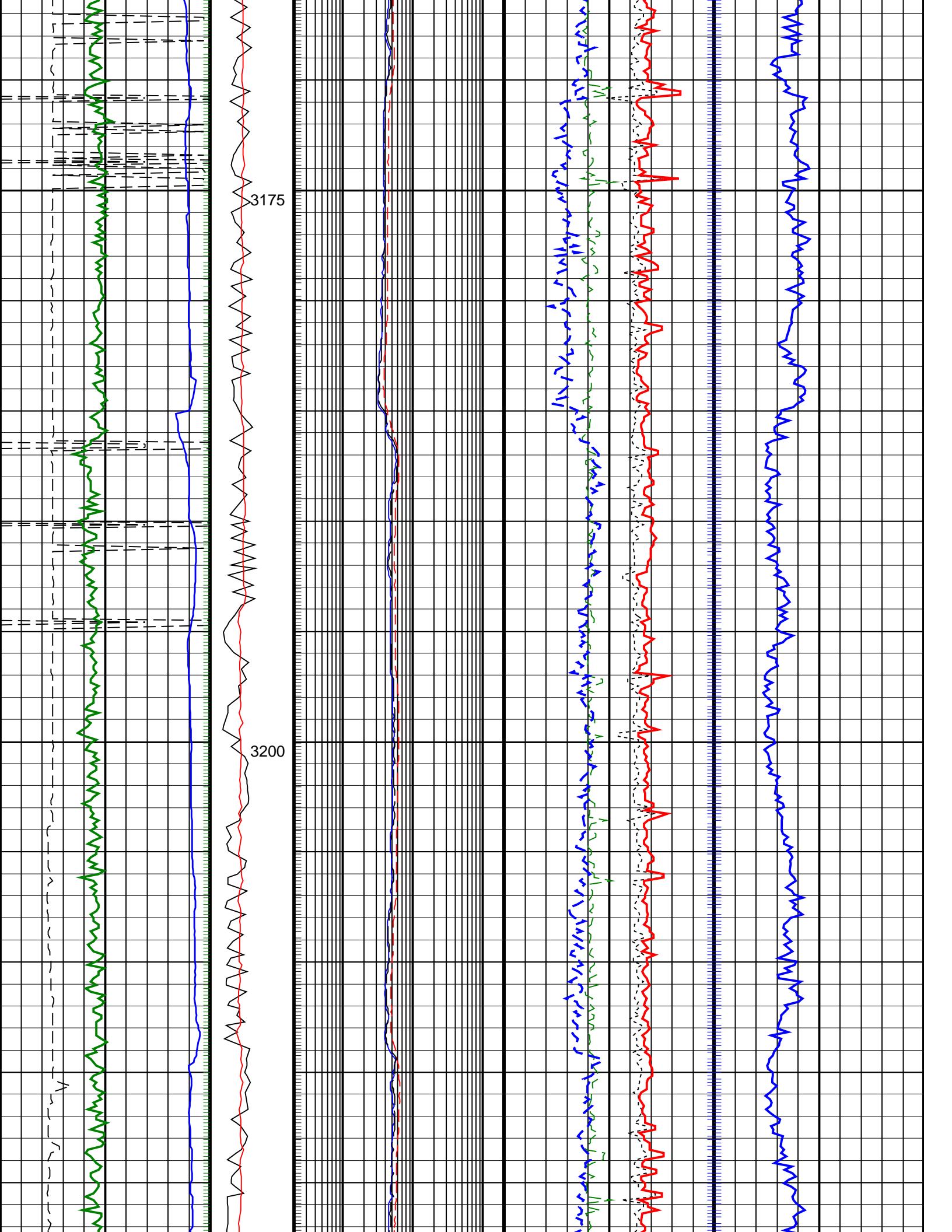


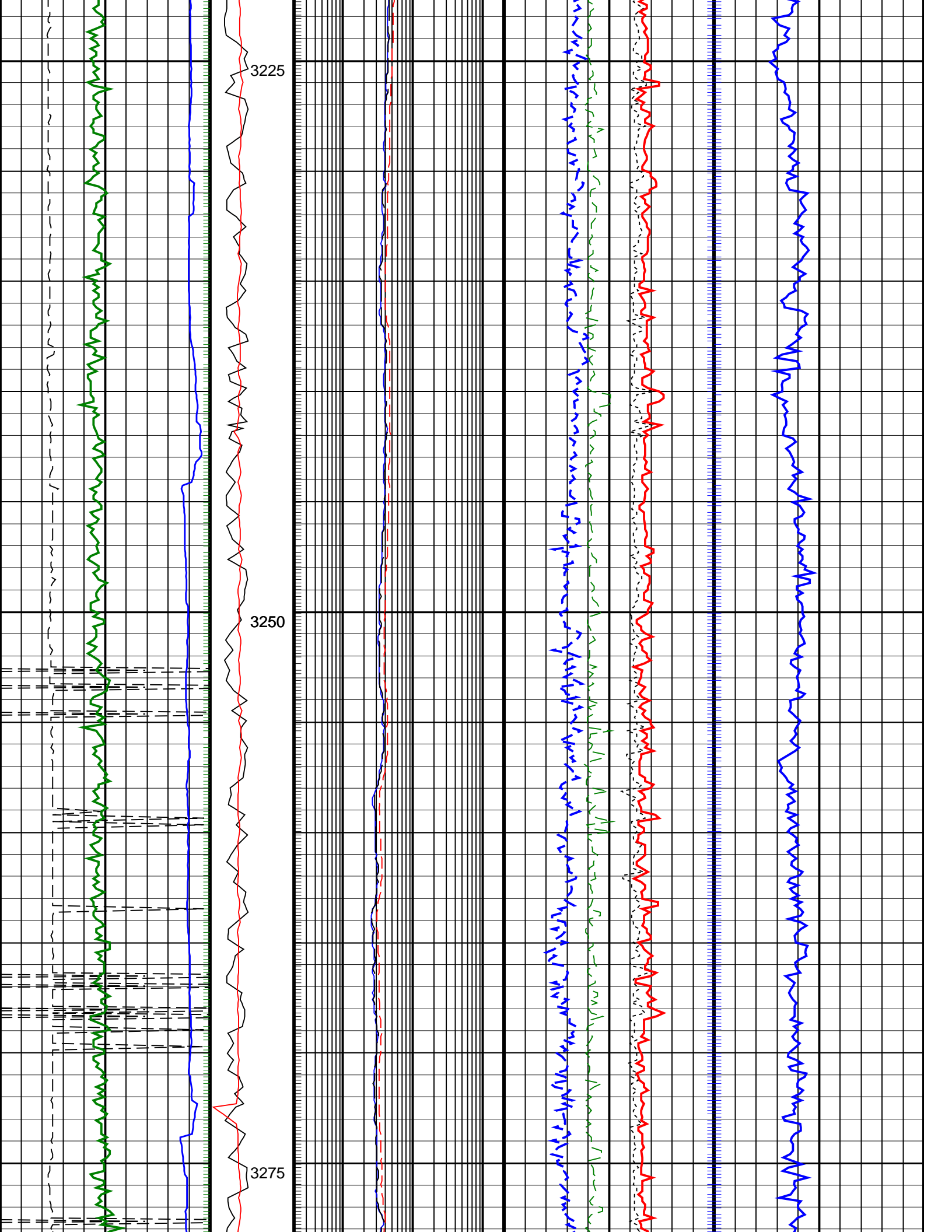


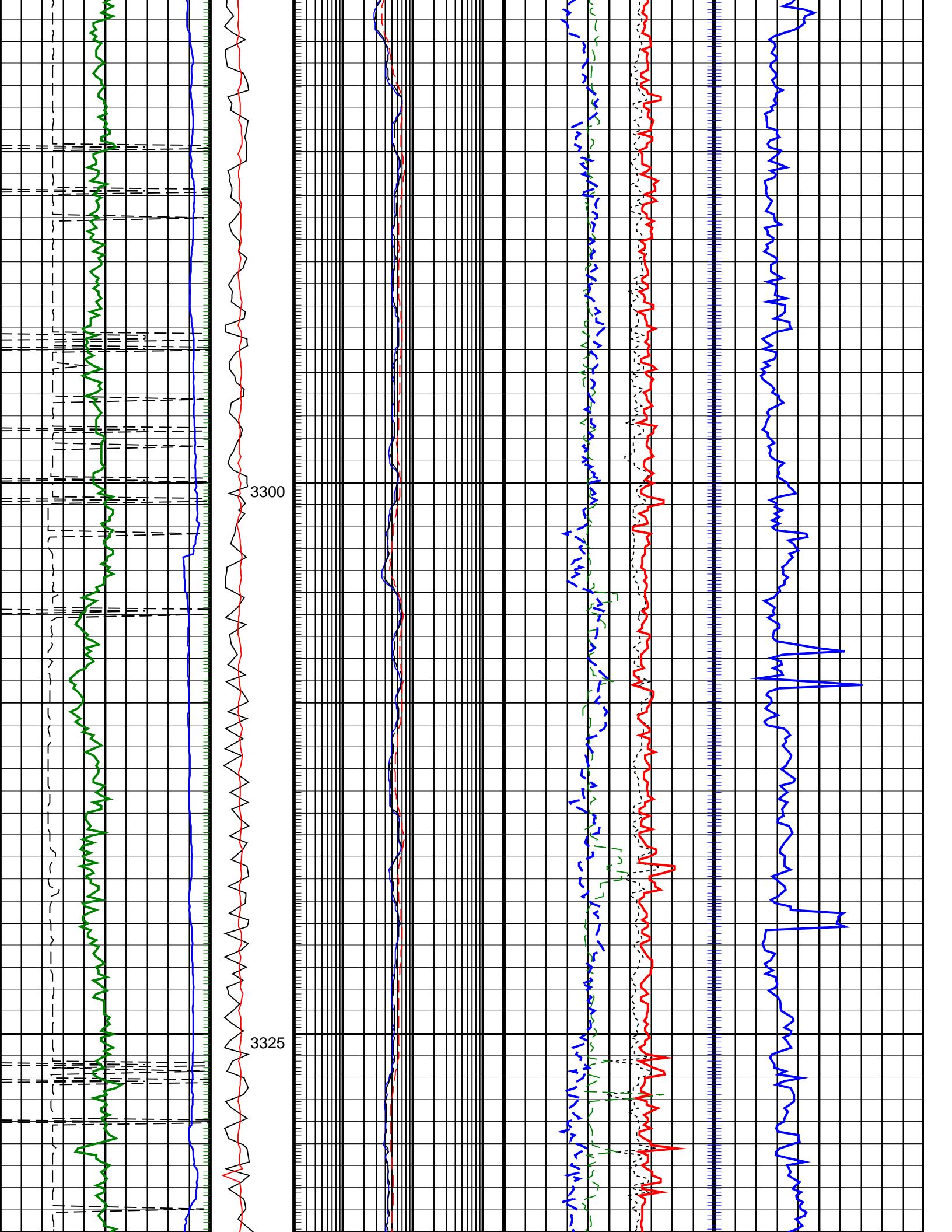


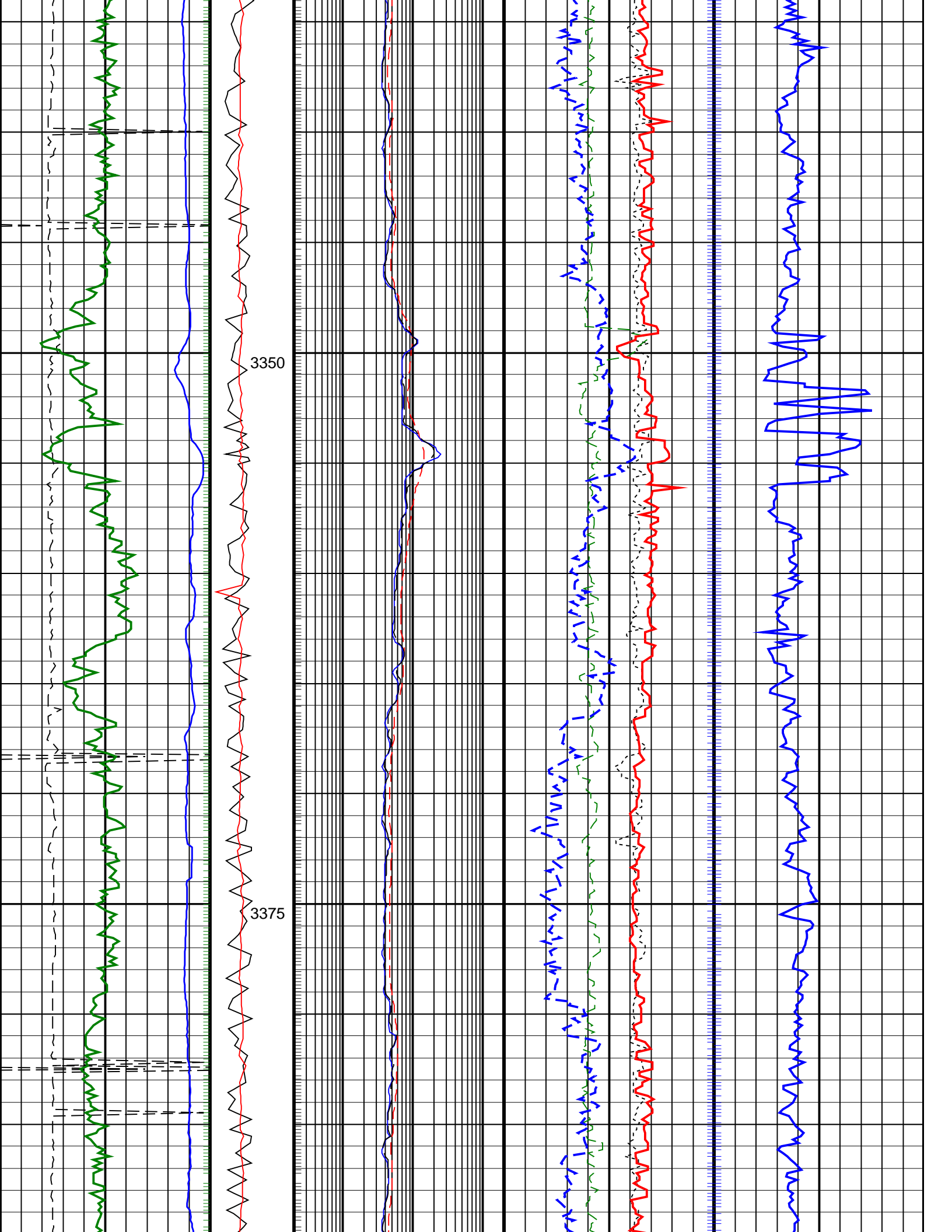


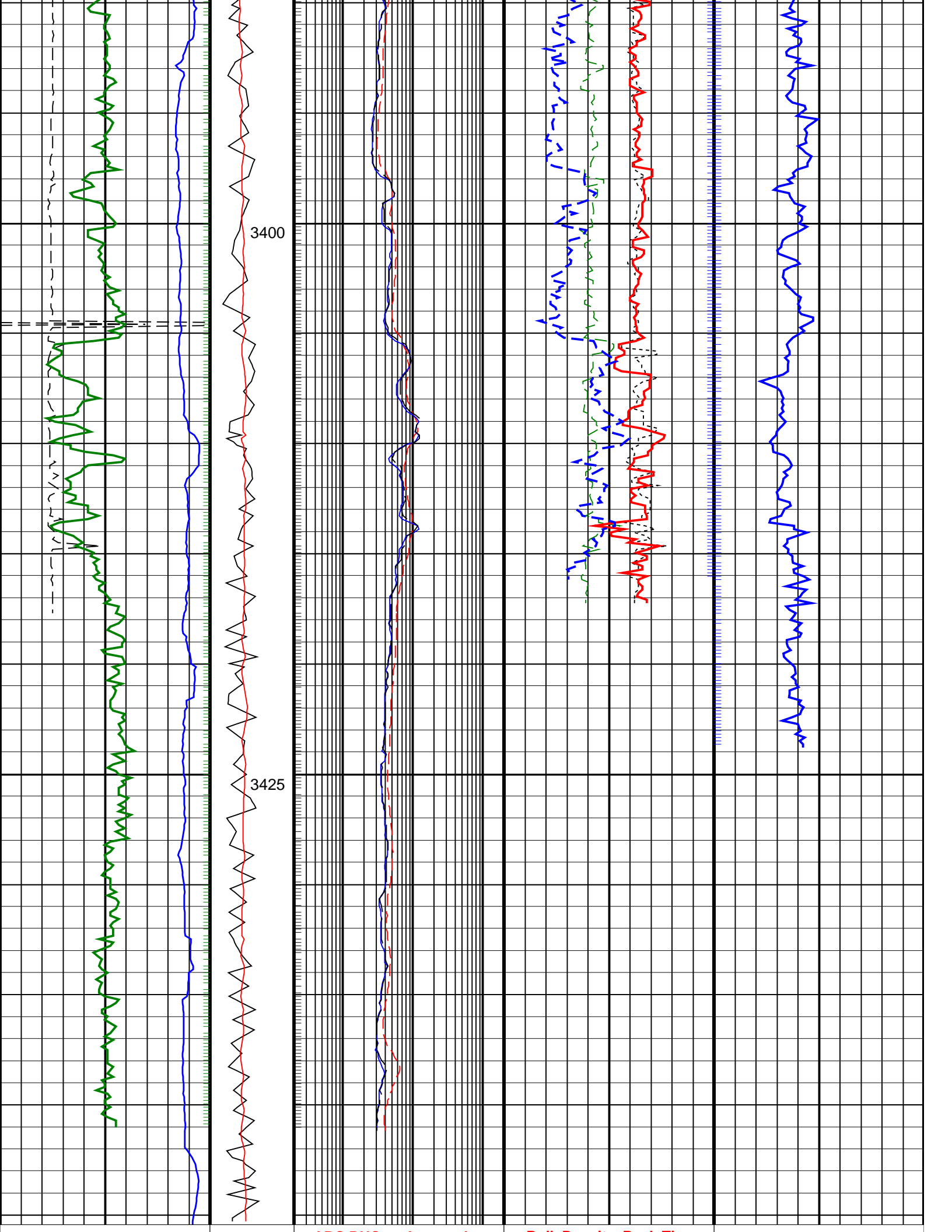












ROP*5 (ROP5) 200 (M/HR) 0	PKPK_RPM (Stick_RT) (RPM) 0 500	ARC BHCorr Attenuation Resistivity 40-in. at 2 MHz, Real-Time (A40H_RT) (OHMM) 0.2 200	Bulk Density, Real-Time Computed Downhole (RHOB_DH_ADN_RT) (G/C3) 1.95 2.95	Delta-T Compressional, Real-Time (DTCO_RT) (US/F) 40 140
Average Borehole Diameter, Real-Time (ADIA_ADN_RT) (IN) 6 16	MWD Collar RPM (CRPM_RT) (RPM) 0 250	ARC BHCorr Phase-Shift Resistivity 16-in. at 2 MHz, Real-Time (P16H_RT) (OHMM) 0.2 200	Bulk Density Correction, Real-Time Computed Downhole (DRHO_DH_ADN_RT) (G/C3) -0.25 0.25	
ARC Gamma Ray, Real-Time (ARC_GR_RT) (GAPI) 0 200		ARC BHCorr Phase-Shift Resistivity 40-in. at 2 MHz, Real-Time (P40H_RT) (OHMM) 0.2 200	Photoelectric Factor, Real-Time (PEF_ADN_RT) (----) 0 10	
			Thermal Neutron Porosity, Real-Time (TNP_H_ADN_RT) (PU) 45 -15	

PIP SUMMARY

+ Gamma Ray Samples

Delta-T Samples +

+ Resistivity Samples

Neutron Samples +

IDEAL Version: ID13_0C_14

IDF